

# Subsurface Temperature Anomalies off Central Oregon During 2014-2021

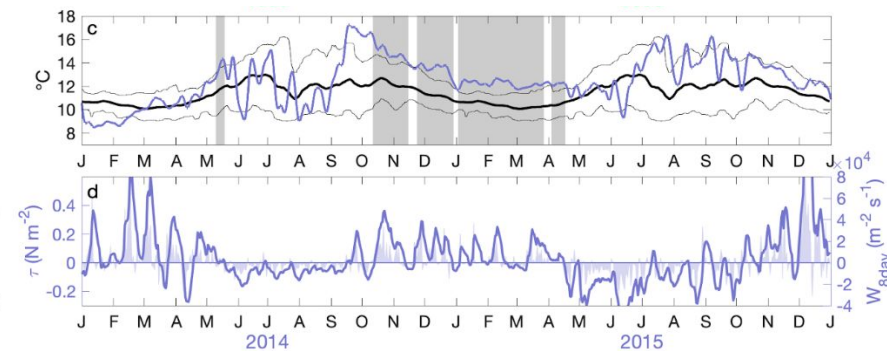
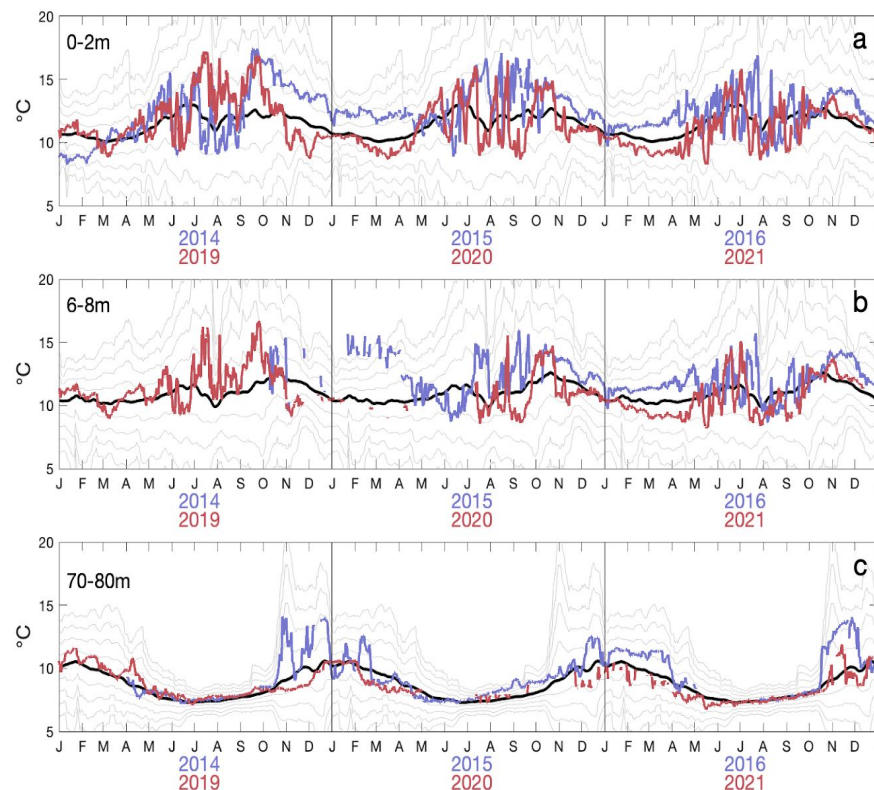
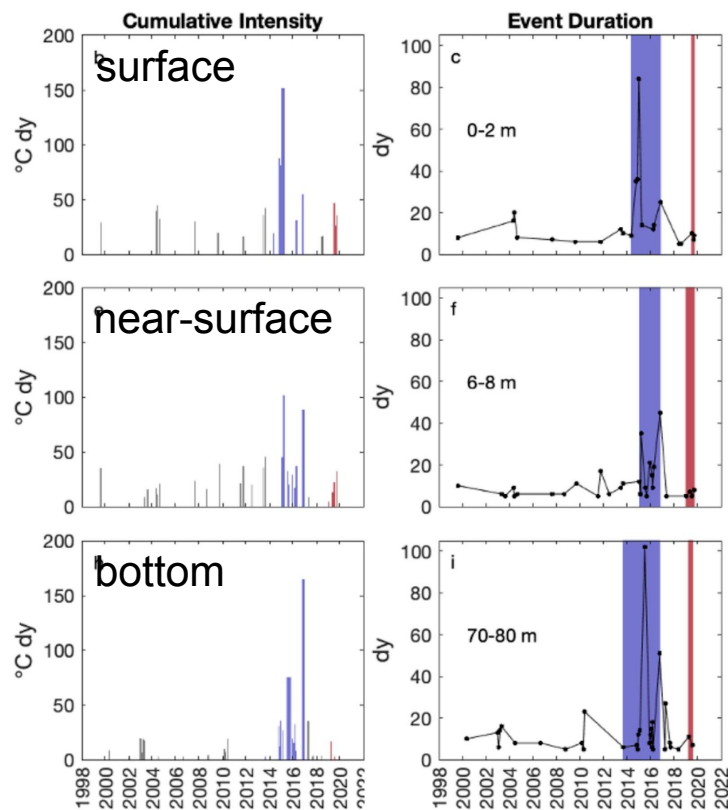
Brandy Cervantes, Melanie Fewings, Craig Risien

Oregon State University, College of Earth, Ocean and Atmospheric Sciences

Increase in MHW characteristics from 1999-2021 varies by depth off central Oregon

The highest temperature anomaly in the 23-year time series was observed **near the bottom** in late 2016

Upwelling winds interrupt MHWs and warming shortens upwelling season



Variation in spring transition date relates to timing and severity of MHW

