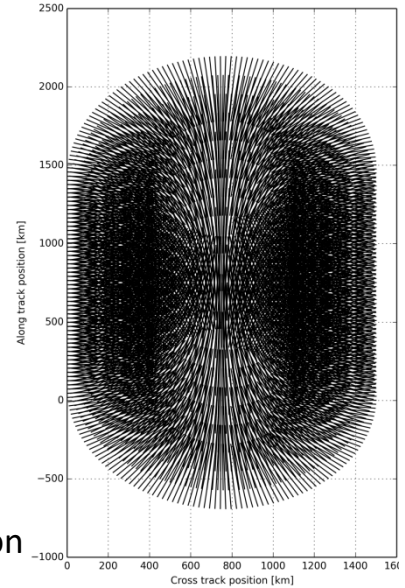
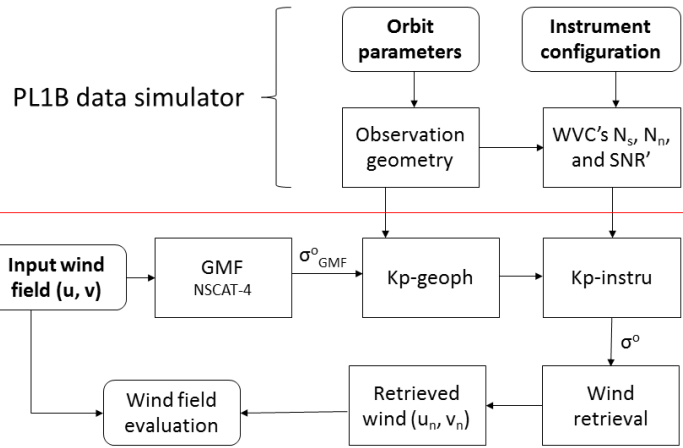




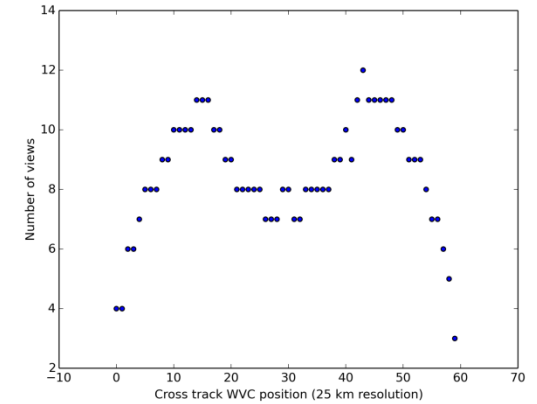
CFOSAT-RFSCAT simulator and wind performance study

Zhen Li, Ad Stoffelen, Jos de Kloel
KNMI, the Netherlands

PL1B Simulator:



Antenna footprint illustration



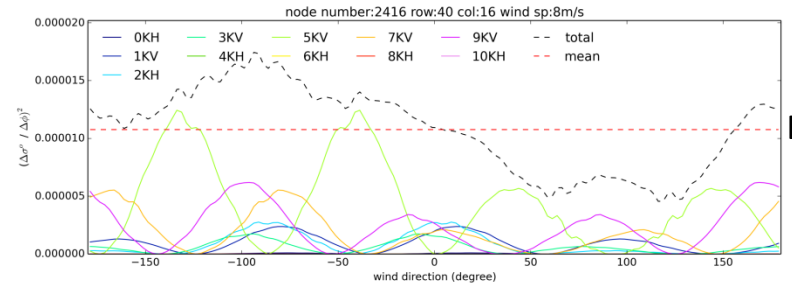
Number of views at cross track WVCs

Apply Beam Weighting Method:

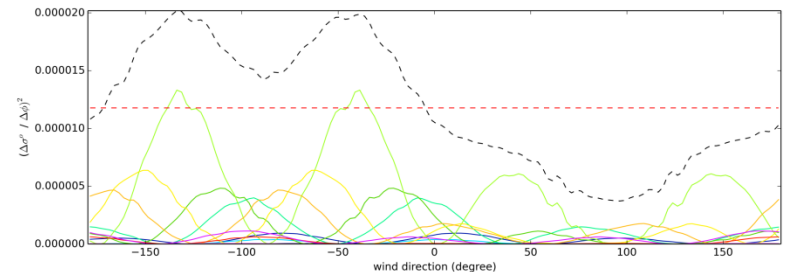
Minimize the distance between total sensitivity and the mean sensitivity in order to achieve constant wind direction sensitivity.

Problem:

The total distance between the total wind sensitivity and the mean sensitivity is reduced after BW (sweet regions), but it does not give much more uniform sensitivity comparing to before BW.



Before



After