

OBSERVED ATLANTIC HURRICANE BOUNDARY LAYER STRUCTURAL ASYMMETRIES WITH RESPECT TO ENVIRONMENTAL CONDITIONS

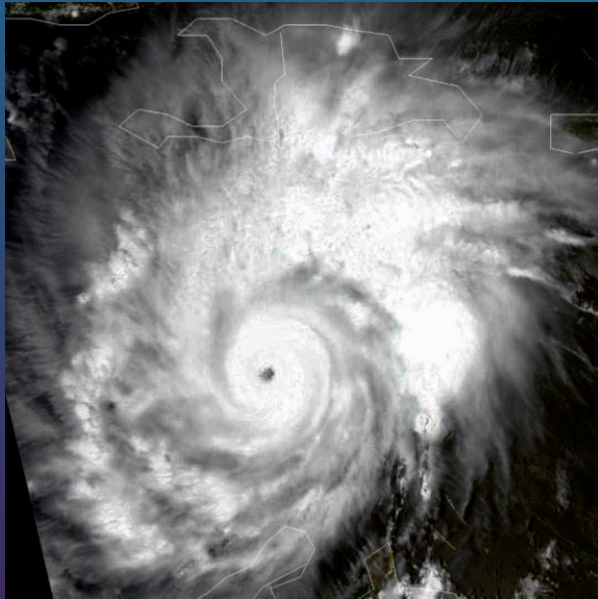
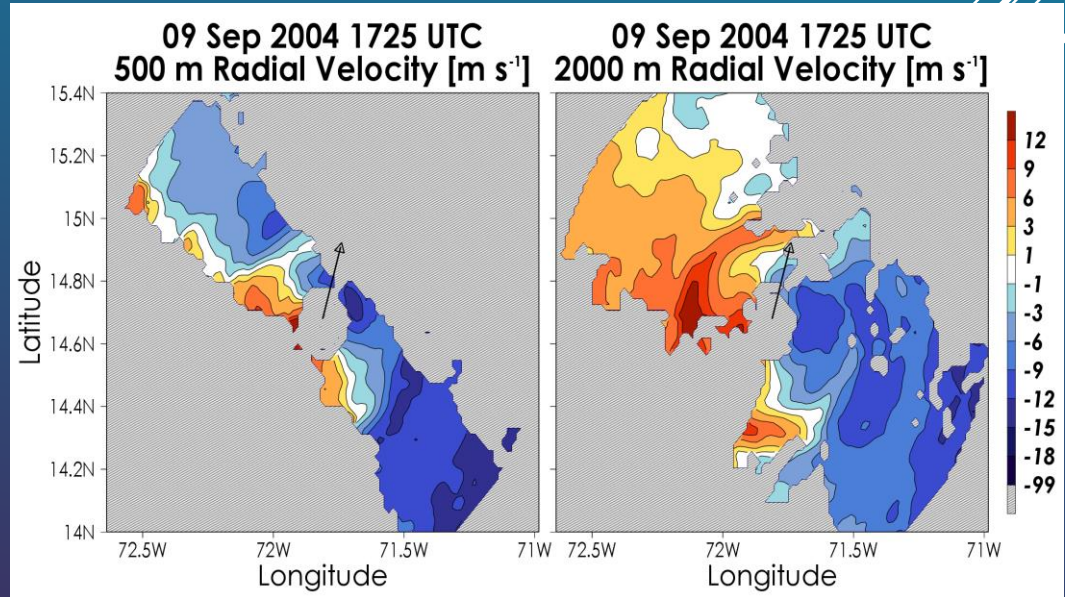


Image of Hurricane Ivan at 1750 UTC 09 September 2004 from the Moderate Resolution Imaging Spectroradiometer (MODIS) onboard NASA satellite Aqua



Doppler radar-derived radial wind data for Hurricane Ivan at 1725 UTC 09 September 2004. SHIPS 850 – 200 hPa shear vector at 1800 UTC is in black.



Kyle Ahern, Mark Bourassa, Robert Hart
Florida State University
Center for Ocean-Atmospheric
Prediction Studies (COAPS)