

Adjustment of Visually Observed Ship Winds (Beaufort winds) in ICOADS

^{1,2}Keqiao Li, ^{1,2}Mark A. Bourassa, ¹Shawn R. Smith

¹Center for Ocean-Atmospheric Prediction Studies (COAPS), Tallahassee, Florida, USA

²Dept. of Earth, Ocean and Atmospheric Science, Florida State University (FSU), Tallahassee, Florida, USAx

The Histogram for Wind Speed
(Beaufort Wind, WI=5,dck=761, from 1970 to 2007)

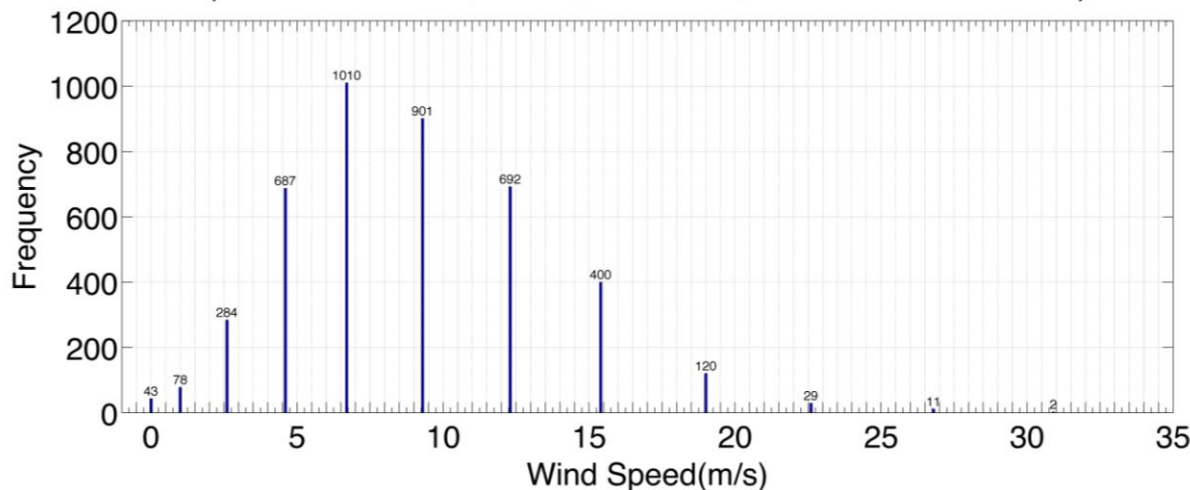


Figure 1. Beaufort wind in the ICOADS R.2.5 with ideal 13 peaks of wind distribution. The frequency of each peak has also been labeled. dck=761: Japanese Whaling Ship Data (CDMP/MIT digitization, 1946-1984).

The Histogram for Wind Speed
(WI=0,dck=888)

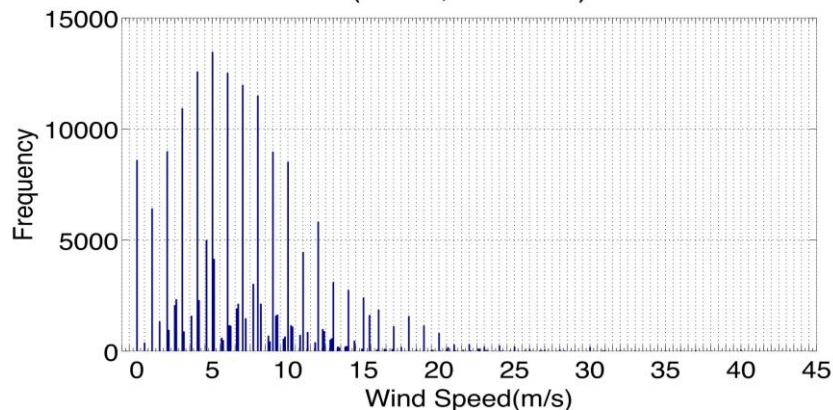


Figure 2. The histogram for WI=0 which is associated with the estimated wind speed was originally recorded in meter per second by dck=888

• My research work is funded by NASA OVWST & ICOADS Value Added Dataset development