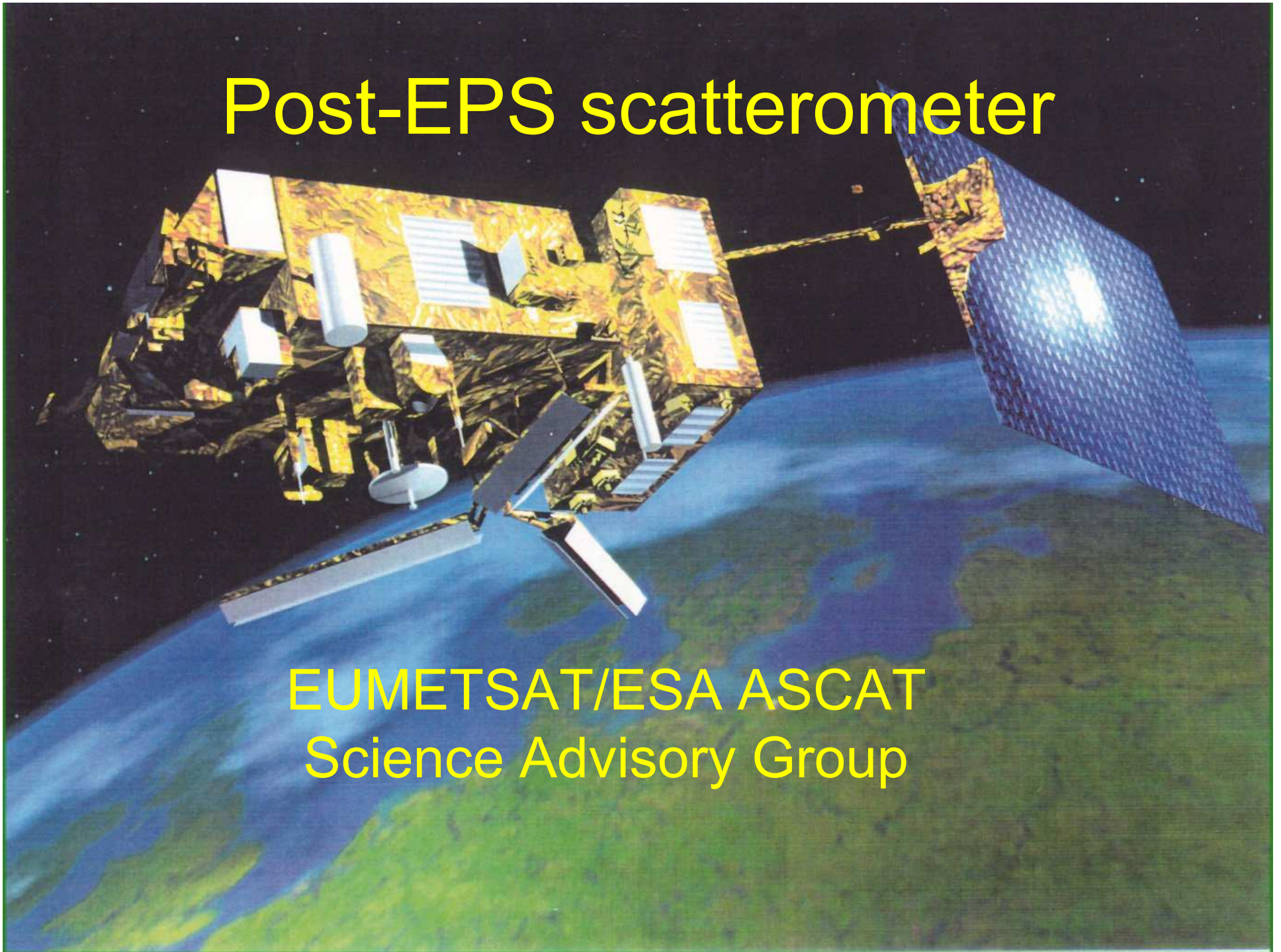


Post-EPS scatterometer

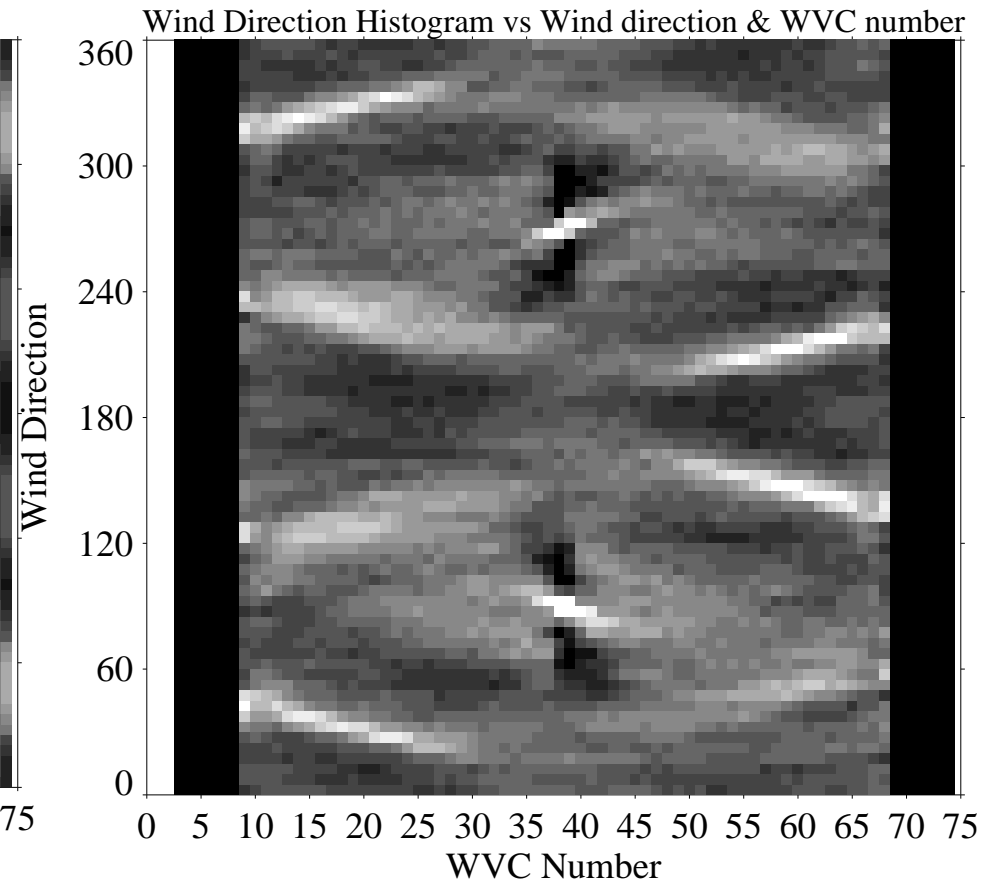
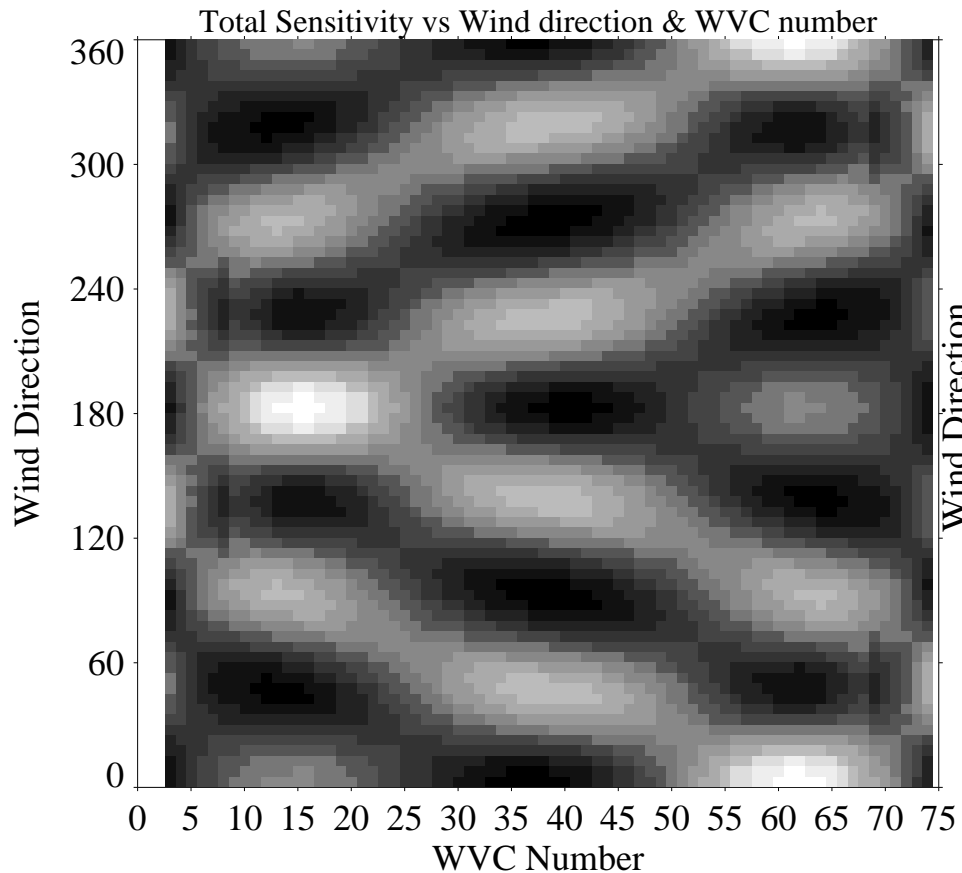
EUMETSAT/ESA ASCAT
Science Advisory Group



Ocean

- Retain C-band (no rain contamination); continuity
- Larger swath width (more scatterometers)
- HH polarisation for extreme winds
- 12.5 km acceptable
- ERS and SeaWinds quality of low winds acceptable
- Preference ASCAT geometry

SeaWinds Rotating Geometry



- Insensitive at certain wind directions
 - Sensitivity gradient causes higher order errors
- (Stoffelen and Portabella, 2006)

Land

- Retain C-band (no rain contamination); continuity
- Larger swath width
- HH polarisation for soil moisture sensitivity
- 7.5 km sampling; 15 km resolution
- ERS quality
- Preference ASCAT geometry due to incidence and azimuth angle variations

Sea Ice

- HH polarisation for sensitivity
- Increased resolution
- ERS quality
- No geometry preference